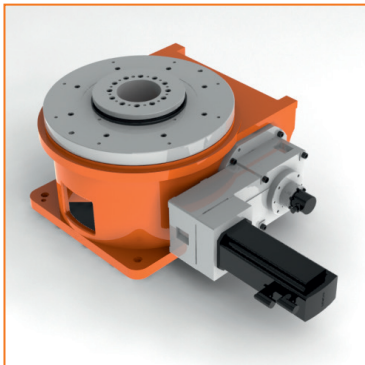




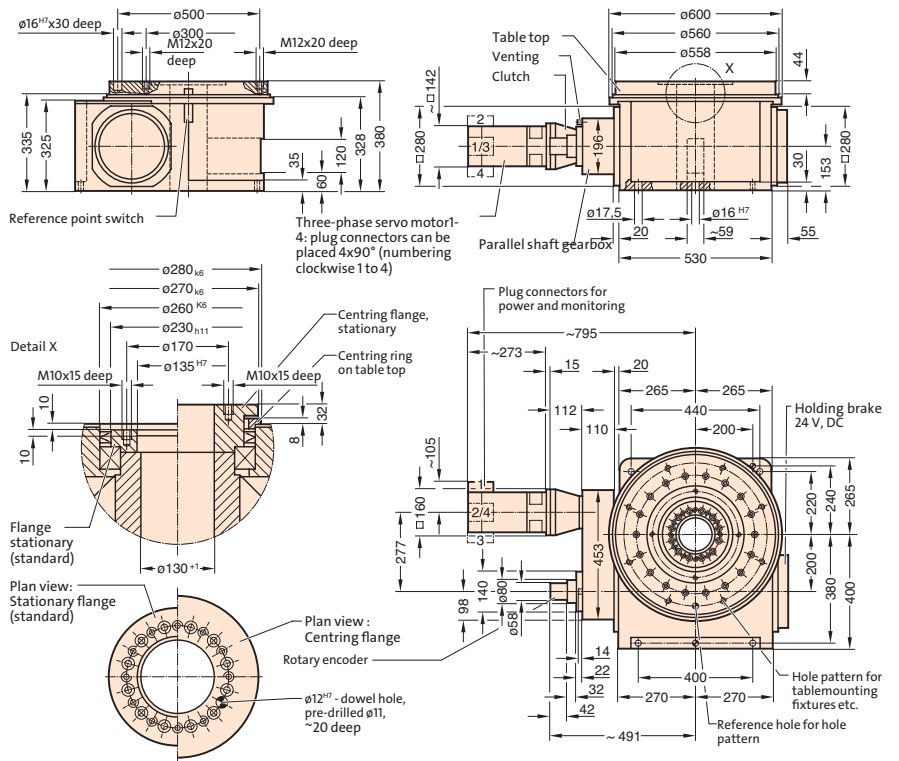
FIBROTOR EM.NC.17.0558.7.111.00.0.0.3



FIBROTOR EM.NC.17.0558.7.111.00.0.0.3

Installed dimensions FIBROTOR® EM.NC.17

(Drive arrangement 111, for other drive arrangement, drawings or CAD-datas are available)



Technical data FIBROTOR® EM.NC.17 **Encoding** EM.NC.17 .

| | | | | |
|--|---|---|----------------------------------|----------------------|
| Table top dimensions | Standard dimensions Strengthened table top bearing Table top lock Built-in version | Ø 558 mm Ø 480 mm Ø 548 mm Ø 558 mm | .0558 .0480 .0548 .0558 | <input type="text"/> |
| Drive motor | Standard brake motor AC servomotor Special version Without motor | | .1 .7 .9 .0 | <input type="text"/> |
| Drive arrangement | See planning documents under www.fibrotor.de/downloads | | .XXX | <input type="text"/> |
| Division | NC - can be positioned arbitrarily | | .00 | <input type="text"/> |
| Additional assemblies | Without additional modules | | .0 | <input type="text"/> |
| | Strengthened table top bearing Hydraulic table top lock | | .1 .2 | |
| | Built-in version Built-in version with mounting ring Vertical version Vertical version with base plate | | .1 .2 .3 .4 | <input type="text"/> |
| | Centring ring Centring flange Centring ring and centring flange | | .1 .2 .3 | <input type="text"/> |
| | Indexing accuracy in arc seconds | Indirect measuring system Direct measuring system Measuring system at motor | ± 30" ± 10" ± 50" | |
| Indexing accuracy in arc length (on Ø 558 mm) | Indirect measuring system Direct measuring system Measuring system at motor | ± 0,040 mm ± 0,014 mm ± 0,067 mm | | |
| Axial runout of Table top | (relates to Ø 558 mm) | | 0,02 mm | |
| Concentricity of the centre hole | (relates to Ø 260 mm) | | 0,02 mm | |
| Plane parallelism of table top to base on the housing | (relates to Ø 558 mm) | | 0,04 mm | |
| Direction of rotation | CW - CCW rotation | | | |
| Reduction ratio worm /roller gearing | | | i = 12 | |

Technical data FIBROTOR® EM.NC.17

| | | |
|-------------------------|--|----------------------|
| RPM at table top | | $n_{max.} = 15'/min$ |
| Centre hole | With lateral opening in the housing | Ø 130 mm |
| Working position | Any, standard: Horizontal table top, (please specify other mounting positions when ordering) | |
| Weight | | approx. 450 kg |

Indexing times FIBROTOR® EM.NC.17

| | | | | | | |
|--|---------|---------|---------|---------|---------|---------|
| Mass moment of inertia J in kgm ² | 150 | 225 | 300 | 600 | 1000 | 1500 |
| Max. perm. table top speed ¹ /min | 16 | 14 | 12 | 10 | 9 | 8 |
| Acceleration time t _a in s | 0,3 | 0,3 | 0,4 | 0,4 | 0,5 | 0,6 |
| Overall gear ratio reduction i | 120,000 | 120,000 | 162,000 | 252,571 | 315,556 | 342,804 |
| Motor speed n in ¹ /min | 1920 | 1680 | 1944 | 2526 | 2840 | 2742 |
| Motor torque required in Nm | 22 | 22 | 18 | 18 | 14 | 12 |
| Swivel time t _s in s for | | | | | | |
| 360° | 4,15 | 4,69 | 5,50 | 6,50 | 7,27 | 8,20 |
| 180° | 2,28 | 2,54 | 3,00 | 3,50 | 3,93 | 4,45 |
| 90° | 1,34 | 1,47 | 1,75 | 2,00 | 2,27 | 2,58 |
| 60° | 1,03 | 1,11 | 1,33 | 1,50 | 1,71 | 1,95 |
| 45° | 0,87 | 0,94 | 1,13 | 1,25 | 1,43 | 1,64 |
| 30° | 0,71 | 0,76 | 0,92 | 1,00 | 1,16 | 1,33 |
| 20° | 0,61 | 0,64 | 0,78 | 0,83 | 0,97 | 1,12 |
| 10° | 0,50 | 0,52 | 0,64 | 0,67 | 0,79 | 0,91 |
| 5° | 0,45 | 0,46 | 0,57 | 0,58 | 0,69 | 0,80 |

Load data FIBROTOR® EM.NC.17

| | | | |
|---|----|-------|-----|
| Perm. transport load | kg | 5500 | ① |
| Horizontal table top | kg | 1000 | ② |
| Vertical table top | kg | 1000 | |
| Table top, upside down | kg | 1000 | |
| Perm. add-on diameter | mm | 2800 | ③ |
| Perm. axial loading on the table top | N | 70000 | ④ |
| Horizontal | N | 12000 | ⑤ |
| Vertical | N | 25000 | ⑥ |
| Perm. radial loading on table top | N | 25000 | ⑥ |
| Perm. tilting moment on positioned table top | Nm | 12000 | ⑦ |
| Horizontal | Nm | 36000 | ⑦ |
| With strenghtened table top bearing | Nm | 5000 | ⑧ |
| Vertical | Nm | 15000 | ⑦ |
| With strenghtened table top bearing | Nm | 3000 | |
| Upside-down | Nm | 3000 | |
| Perm. tilting moment on rotating table top | Nm | 4000 | ⑦+⑧ |
| With strenghtened table top bearing | Nm | 12000 | |
| Upside-down | Nm | 1100 | |
| Perm. tangential moment on positioned table top, from machining force and in vertical position additionally from eccentric transport load | Nm | 700 | ⑨ |
| With hydraulic table top lock | Nm | 2500 | ⑨ |

