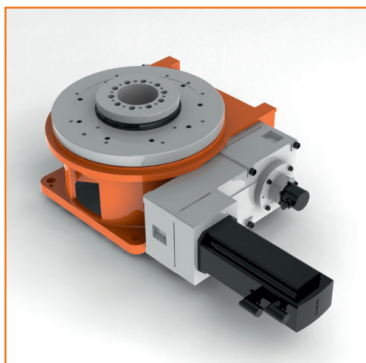
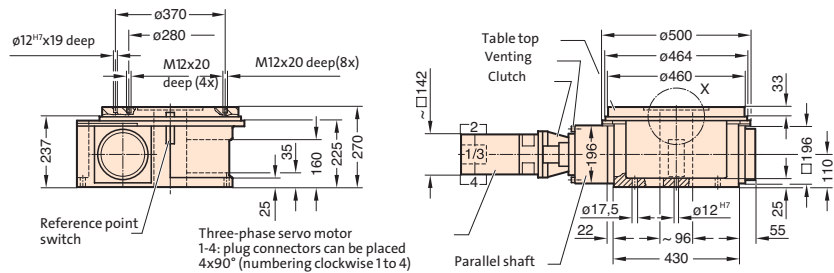


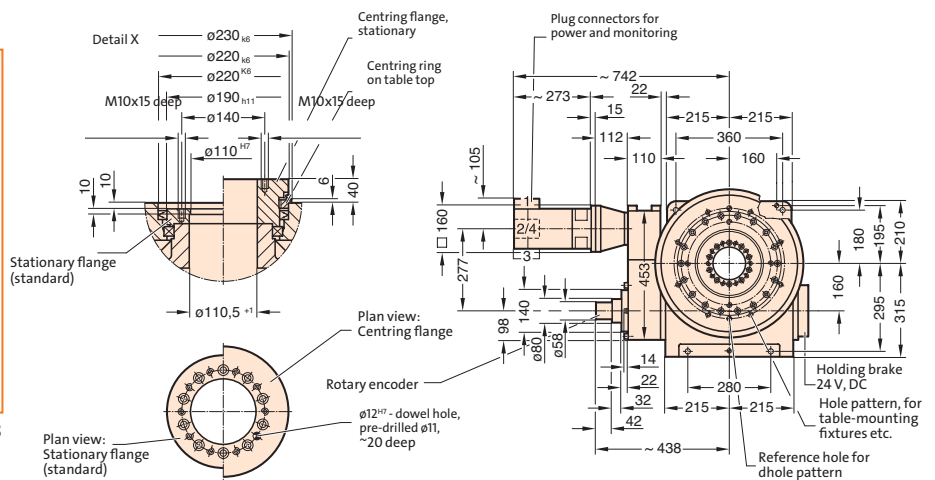
FIBROTOR EM.NC.16.0460.7.111.00.0.0.3

### Installed dimensions FIBROTOR® EM.NC.16

(Drive arrangement 111, for other drive arrangement, drawings or CAD-datas are available)



FIBROTOR EM.NC.16.0460.7.111.00.0.0.3



### Technical data FIBROTOR® EM.NC.16

### Encoding

EM.NC.16 . ② . ③ . ④ . ⑤ . ⑥ . ⑦ . ⑧

<b>Table top dimensions</b>	Standard dimensions Strengthened table top bearing Table top lock Built-in version	Ø 460 mm Ø 394 mm Ø 440 mm Ø 460 mm	.0460 .0394 .0440 .0460	②
<b>Drive motor</b>	Standard brake motor AC servomotor Special version Without motor		.1 .7 .9 .0	③
<b>Drive arrangement</b>	See planning documents under <a href="http://www.fibrotor.de/downloads">www.fibrotor.de/downloads</a>		.XXX	④
<b>Division</b>	NC - can be positioned arbitrarily		.00	⑤
<b>Additional assemblies</b>	Without additional modules Strengthened table top bearing Hydraulic table top lock		.0 .1 .2	⑥
	Built-in version Built-in version with mounting ring Vertical version Vertical version with base plate		.1 .2 .3 .4	⑦
	Centring ring Centring flange Centring ring and centring flange		.1 .2 .3	⑧
<b>Indexing accuracy in arc seconds</b>	Indirect measuring system Direct measuring system Measuring system at motor	± 30" ± 10" ± 60"		
<b>Indexing accuracy in arc length (on Ø 460 mm)</b>	Indirect measuring system Direct measuring system Measuring system at motor	± 0,033 mm ± 0,011 mm ± 0,067 mm		
<b>Axial runout of Table top</b>	(relates to Ø 460 mm)	0,015 mm		
<b>Concentricity of the centre hole</b>	(relates to Ø 220 mm)	0,015 mm		
<b>Plane parallelism of table top to base on the housing</b>	(relates to Ø 460 mm)	0,040 mm		
<b>Direction of rotation</b>	CW - CCW rotation			
<b>Reduction ratio worm / roller gearing</b>		i = 12		

## Technical data FIBROTOR® EM.NC.16

<b>RPM at table top</b>		$n_{max.} = 20'/min$
<b>Centre hole</b>	With lateral opening in the housing	Ø 110 mm
<b>Working position</b>	Any, standard: Horizontal table top, (please specify other mounting positions when ordering)	
<b>Weight</b>		approx. 220 kg

## Indexing times FIBROTOR® EM.NC.16

Mass moment of inertia J in kgm <sup>2</sup>	60	100	150	225	300	600
Max. perm. table top speed <sup>1</sup> /min	20	16	12	10	9	8
Acceleration time t <sub>a</sub> in s	0,2	0,2	0,3	0,4	0,5	0,6
Overall gear ratio reduction i	120,000	120,000	162,000	252,571	315,556	342,804
Motor speed n in <sup>1</sup> /min	2400	1920	1944	2526	2840	2742
Motor torque required in Nm	20	20	12	10	8	6
Swivel time t <sub>s</sub> in s for						
360°	3,30	4,05	5,40	6,50	7,27	8,20
180°	1,80	2,18	2,90	3,50	3,93	4,45
90°	1,05	1,24	1,65	2,00	2,27	2,58
60°	0,80	0,93	1,23	1,50	1,71	1,95
45°	0,68	0,77	1,03	1,25	1,43	1,64
30°	0,55	0,61	0,82	1,00	1,16	1,33
20°	0,47	0,51	0,68	0,83	0,97	1,12
10°	0,38	0,40	0,54	0,67	0,79	0,91
5°	0,34	0,35	0,47	0,58	0,69	0,80

## Load data FIBROTOR® EM.NC.16

Perm. transport load			
Horizontal table top	kg	4000	①
Vertical table top	kg	800	②
Table top, upside down	kg	800	
Perm. add-on diameter	mm	2400	③
Perm. axial loading on the table top			
Horizontal	N	32000	④
Vertical	N	11000	⑤
Perm. radial loading on table top	N	20000	⑥
Perm. tilting moment on positioned table top			
Horizontal	Nm	9000	⑦
With strenghtened table top bearing	Nm	27000	⑦
Vertical	Nm	4200	⑧
With strenghtened table top bearing	Nm	12600	⑦
Upside-down	Nm	2300	
Perm. tilting moment on rotating table top			
With strenghtened table top bearing	Nm	3000	⑦+⑧
Upside-down	Nm	9000	
Perm. tangential moment on positioned table top, from machining force and in vertical position additionally from eccentric transport load			
With hydraulic table top lock	Nm	500	⑨
	Nm	1900	⑨

