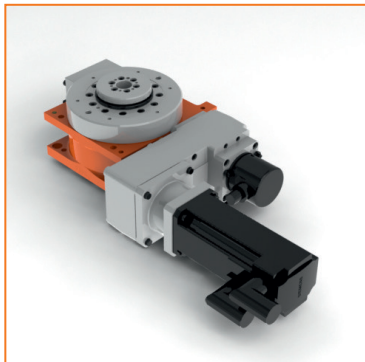


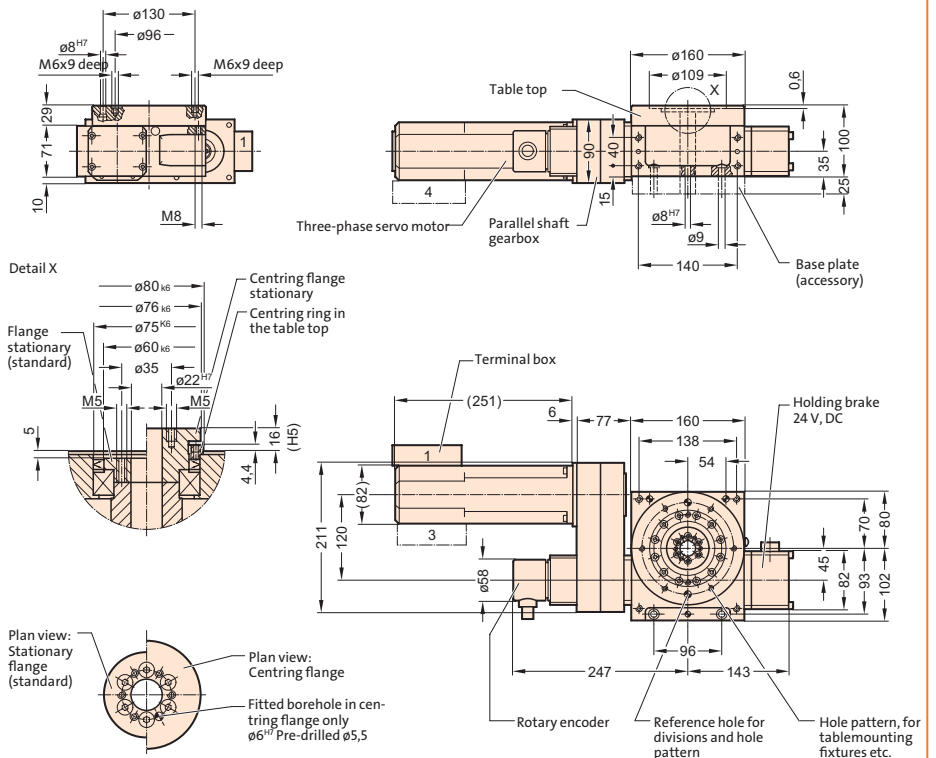
FIBROTOR EM.NC.11.0160.7.111.00.0.0.3



FIBROTOR EM.NC.11.0160.7.111.00.0.0.3

Installed dimensions FIBROTOR® EM.NC.11

(Drive arrangement 111, for other drive arrangement, drawings or CAD-datas are available)



Technical data FIBROTOR® EM.NC.11		Encoding	
		EM.NC.11	
Table top dimensions	Standard dimensions Strengthened table top bearing Table top lock Built-in version	Ø 160 mm Ø 118mm Ø 155 mm Ø 160 mm	.0160 .0118 .0155 .0160
Drive motor	Standard braking motor AC servomotor Special version Without motor		.1 .7 .9 .0
Drive arrangement	See planning documents under www.fibrotor.de/downloads		.XXX
Division	NC - can be positioned arbitrarily		.00
Additional assemblies	Without additional modules Strengthened table top bearing Hydraulic table top lock Built-in version Built-in version with mounting ring Vertical version Vertical version with base plate Centring ring Centring flange Centring ring and centring flange		.0 .1 .2 .1 .2 .3 .4 .1 .2 .3
Indexing accuracy in arc seconds	Direct measuring system Indirect measuring system Measuring system at motor	± 20" ± 60" ± 210"	
Indexing accuracy in arc length (on Ø 160 mm)	Direct measuring system Indirect measuring system Measuring system at motor	± 0,008 mm ± 0,024 mm ± 0,120 mm	
Axial runout of Table top	(relates to Ø 160 mm)	0,01 mm	
Concentricity of the centre hole	(relates to Ø 75 mm)	0,01 mm	
Plane parallelism of table top to base on the housing	(relates to Ø 160 mm)	0,02 mm	
Direction of rotation	CW - CCW rotation		
Reduction ratio worm /roller gearing		i = 12	

Technical Data FIBROTOR® EM.NC.11

RPM at table top		$n_{max.} = 30'/min$
Centre hole		$\varnothing 22\text{ mm}$
Working position	Any, standard: Horizontal table top, (please specify other mounting positions when ordering)	
Weight		approx. 20 kg

Indexing times FIBROTOR® EM.NC.11

Mass moment of inertia J in kgm^2	1	2	4	8	12
Max. perm. table top speed $'/min$	30	25	15	10	6
Acceleration time t_a in s	0,2	0,2	0,2	0,2	0,2
Overall gear ratio reduction i	96,000	120,000	179,052	215,208	312,000
Motor speed n in $'/min$	2880	3000	2686	2152	1872
Motor torque required in Nm	1,0	1,0	1,0	1,0	1,0
Swivel time t_s in s for					
360°	2,30	2,70	4,30	6,30	10,30
180°	1,30	1,50	2,30	3,30	5,30
90°	0,80	0,90	1,30	1,80	2,80
60°	0,63	0,70	0,97	1,30	1,97
45°	0,55	0,60	0,80	1,05	1,55
30°	0,47	0,50	0,63	0,80	1,13
20°	0,41	0,43	0,52	0,63	0,86
10°	0,36	0,37	0,41	0,47	0,58
5°	0,33	0,33	0,36	0,38	0,44
2°	0,31	0,31	0,32	0,33	0,36

Load data FIBROTOR® EM.NC.11

Perm. transport load			
Horizontal table top	kg	500	①
Vertical table top	kg	200	②
Table top, upside down	kg	200	
Perm. add-on diameter	mm	800	③
Perm. axial loading on the table top			
Horizontal	N	8000	④
Vertical	N	3500	⑤
Perm. radial loading on table top	N	3500	⑥
Perm. tilting moment on positioned table top			
Horizontal	Nm	750	⑦
With strenghtened table top bearing	Nm	2250	⑦
Vertical	Nm	450	⑧
With strenghtened table top bearing	Nm	1350	⑧
Upside-down	Nm	250	⑧
Perm. tilting moment on rotating table top			
With strenghtened table top bearing	Nm	200	⑦+⑧
Upside-down	Nm	600	
Upside-down	Nm	100	
Perm. tangential moment on positioned table top, from machining force and in vertical position additionally from eccentric transport load			
With hydraulic table top lock	Nm	125	⑨
	Nm	450	⑨

