



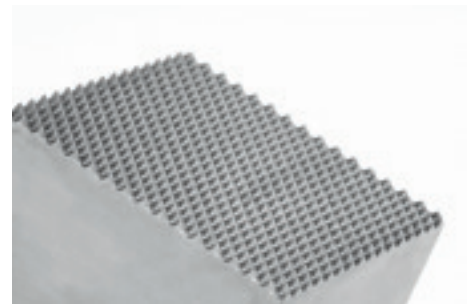
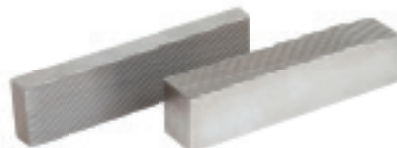
# Surface and Profile Grinding

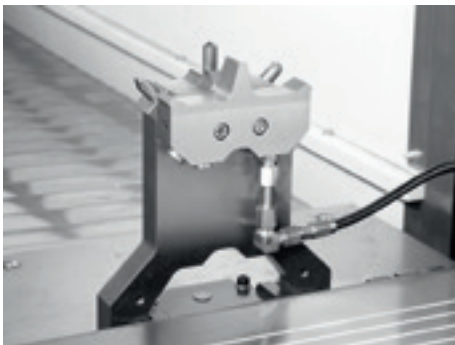


smartLine Basic

## Experience the smartLine Basic

The smartLine covers the entire spectrum of travelling table grinding machines. From simple reciprocation surface grinding through speed-stroke, slot and profile grinding all the way to creep-feed grinding. This machine concept solves every grinding task. The machine's versatile building block system is designed to allow almost any combination of components to solve your specific grinding task.





Folding 3-way dressing unit

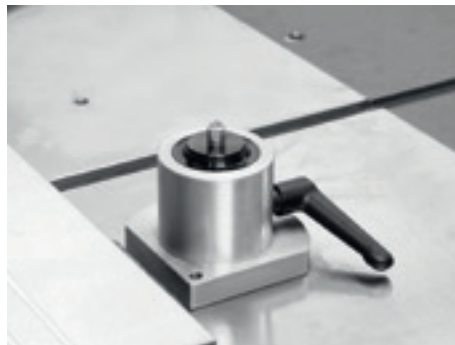


Table-mounted dresser with 1 diamond

## Benefit Overview

- Good cost-performance ratio
- High-powered spindle
- Roll dressing unit on spindle head
- Flexible process guidance
- Multi-axes machining

## Design Characteristics

### Separate Front and Rear Base with fused Joint

- High-precision machining of components
- Highest precision in the machine through exact alignment of the axes before fusing of the base components

### Machine Base and Column made from Microgranit

- Much higher rigidity
- Optimal dampening characteristics
- High thermal stability of machine base and column
- Environmentally friendly through cold casting process

### Multi-axes machining

- Up to 10 CNC-axes

## Machine Concept

### Selection of four Table Drive Systems

- Hydraulic cylinder
- Belt drive
- Ball screw
- Hydrostatic leadscrew

### Can be combined with

- V/flat guideways
- Linear guideways

### Three Controls Packages

- xpressCube (SPS-control for surface grinding)
- xpressCube Pro (entry-level profile grinding)
- Sinumerik 840D

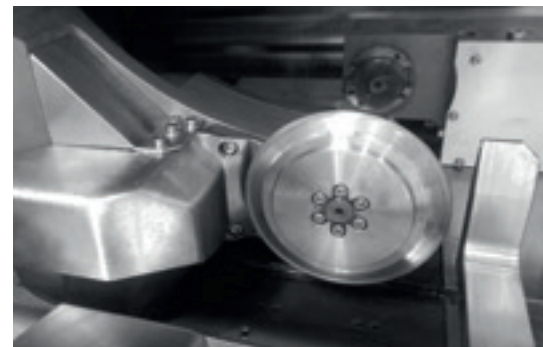
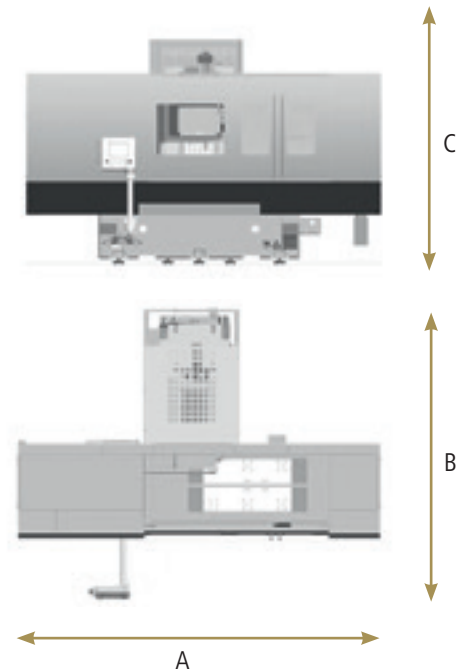


Table-mounted CNC roll dressing unit

smartLine Basic	N	BD	BL
Grinding Width (mm)	400	600	750
Grinding Length (mm)	600/1,000/1,500	600/1,000/1,500/2,000	1,000/1,500/2,000
Distance Spindle Center to Table (mm)	650	700/900	700/900
Spindle Power (kW)	5.5/9	10/15	
Spindle Cone (mm)	36	60	
Grinding Wheel (mm)	300 x 50 x 76.2	400 x 100 x 127	

Dimensions / Weight			
Length A (mm)	3,300/4,100/5,200	3,300/4,100/5,200/6,100	4,100/5,200/6,100
Width B (mm)	2,250	2,625	3,000
Height C (mm)	2,350	2,650	2,650
Weight (kg)	4,700/5,400/6,200	6,500/8,000/9,200/11,500	8,500/10,000/12,500

All values are approximated and may change depending on selected options.  
All information is subject to change.



### Contact

**ELB-SCHLIFF Werkzeugmaschinen GmbH**

Bollenwaldstraße 116  
63743 Aschaffenburg  
GERMANY  
T +49 6028 408-0  
F +49 6028 408-509  
info@autania-gt.de  
www.autania-gt.de

A company of Autania AG, Germany



**Grinding Applications  
for a Global Market**

